



K-FLEX USA
INNOVATION IN INSULATION

PLUMBING

HVAC/R

COMMERCIAL/INDUSTRIAL

MARINE

OIL&GAS

SOLAR

www.kflexusa.com

info@kflexusa.com

1-800-765-6475

K-FLEX DUCT® LINER GRAY

Flexible closed cell gray insulation supplied with or without PSA. Designed for the sheet metal and insulation contractor market.



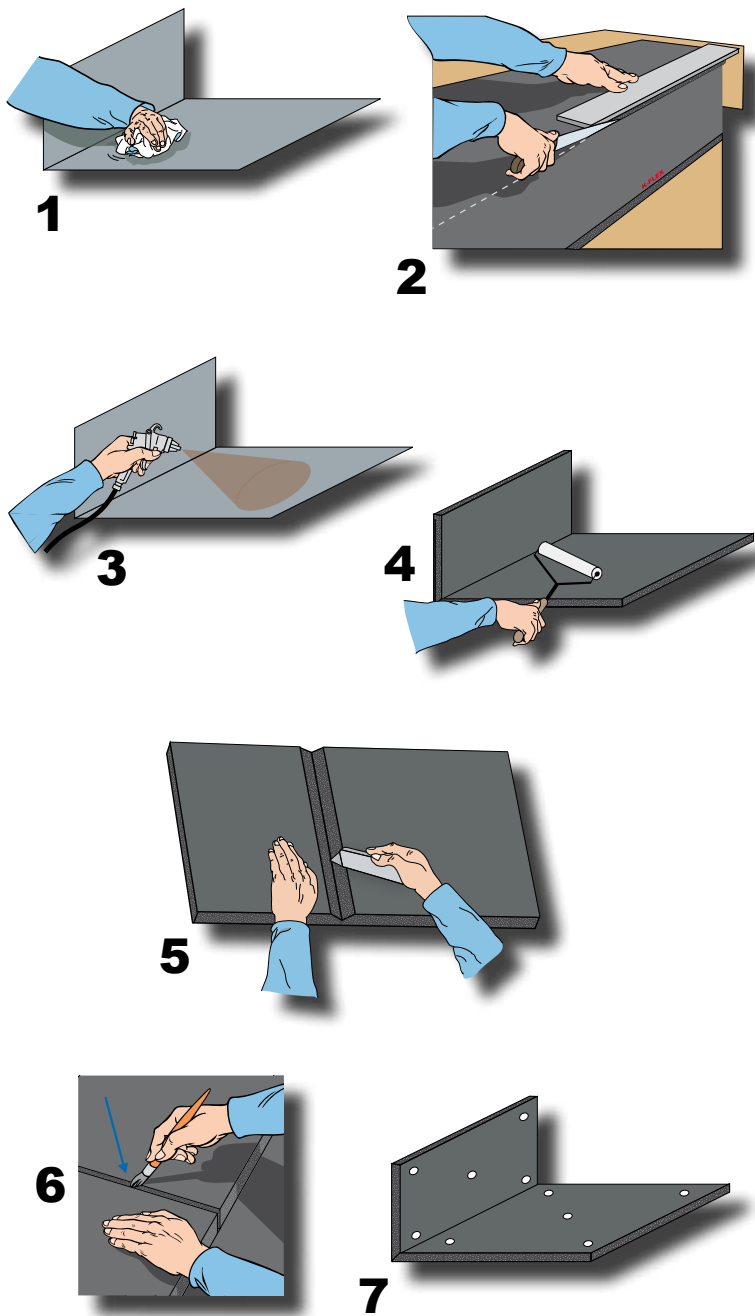
Contains a Protective
Antimicrobial Agent



**K-FLEX DUCT® LINER GRAY –
INSULATING AIR HANDLING SYSTEMS
MANUALLY
USING CONTACT ADHESIVE**

- 1** Thoroughly clean the surface to be insulated.
- 2** Cut K-Flex Duct® Liner Gray to the correct size (refer to installation guidelines available on our website). Always cut oversize (1/8") to provide a slight compression fit. Avoid stretching the material. Because of its flexibility and ease of cutting, elastomeric sheet is ideal for insulating irregular shapes.
- 3** Apply approved contact adhesive (refer to technical bulletins available on our website) to both surfaces by brush, roller or spray. Minimum coverage rate shall be 90 percent. Allow adhesive to become tacky before mating surfaces. Note: some spray adhesives provide acceptable adhesion with a one sided application (to the sheetmetal only). We recommend testing to determine acceptability of this method.
- 4** For best results, use a roller to apply uniform pressure to insure full contact to the sheetmetal.
- 5** On most coil lines, the insulation material can be bent along with the sheet metal. As an alternative, a v-groove cut one half the depth of the insulation can be made where the bend occurs, to avoid overcompressing the insulation.
- 6** Where liner is installed to individual sections, adjoin adjacent liner sections using approved adhesive.
- 7** Apply mechanical fasteners in accordance with HVAC DUCT CONSTRUCTION STANDARDS, METAL AND FLEXIBLE, pp 2.24-2.27 published by SMACNA (second edition). Note: Use caution when using weld pins with solvent based adhesives.

K-Flex Duct® Liner Gray is also compatible with several hot melt adhesive systems. Contact K-Flex USA for additional information.



**K-FLEX DUCT® LINER GRAY –
INSULATING AIR HANDLING SYSTEMS
MANUALLY
USING ROLLS WITH PSA**

- 8** Follow cleaning and cutting procedures as outlined in items 1 and 2 above.
- 9** Partially remove the release liner, exposing 8-10" of the adhesive. Carefully align and install the liner on the sheetmetal. Remove remaining release liner and install liner. Follow procedures as outlined in items 4 thru 6 above.
- 10** Apply mechanical fasteners as outlined in item 7 above.

