



K-FLEX USA
INNOVATION IN INSULATION

PLUMBING

HVAC/R

COMMERCIAL/INDUSTRIAL

MARINE

OIL&GAS

SOLAR

www.kflexusa.com

info@kflexusa.com

1-800-765-6475

INSTALLATION GUIDE

K-FLEX CLAD® AL and WT Systems



Contains a Protective Antimicrobial Agent

Made in USA



INSTALLATION INSTRUCTIONS*

K-FLEX CLAD® PRODUCTS, available in both tubular and sheet form, come adhered to standard black product or to K-FLEX ECO™, a halogen-free insulation. K-FLEX Clad® are composite products comprised of a flexible, closed-cell elastomeric insulation factory-applied to an outer covering, resulting in a product that is UV-protected, easy to clean, resistant to abuse, impact and chemicals,

and can be installed in a one-step process. K-FLEX Clad® systems are the ideal choice for food processing plants, pharmaceutical labs, film processing centers, electronics facilities, and other clean room applications.

K-FLEX Clad® products can also be used in conjunction with K-Fit™ fittings.

*NOTE: All instructions must be followed to validate the K-FLEX USA warranty.

STANDARD TUBE



STEP 1: Wrap the K-FLEX Clad® insulation around the pipe. Remove liner from the insulation by pinching the release liner and peeling the liner to expose the pressure sensitive adhesive (PSA). Seal ends first and work towards center.



STEP 2: Remove release liner from insulation seam. The K-FLEX Clad® surface must be **clean and dry**. Peel back the release liner from the overlap seam and apply uniform pressure to seal flap. Start at center and work towards ends.



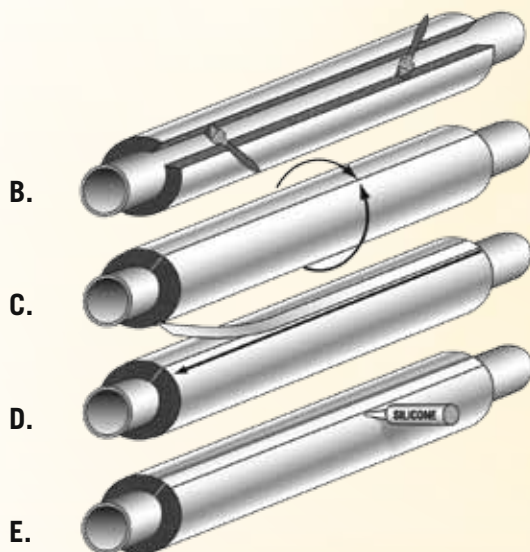
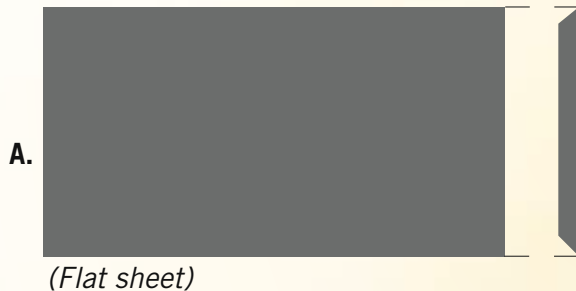
STEP 3: Apply mechanical fasteners supplied in the box (K-FLEX® Rivets). Apply 5 rivets for every 3 foot length and insert approximately 1/4" from longitudinal edge.



STEP 4: Use 2" wide K-FLEX Clad® Tape (included in the box) to cover butt seams. Apply even pressure and complete installation by inserting 2 mechanical rivets on the overlap area (1 on the tube and 1 on connecting tube).

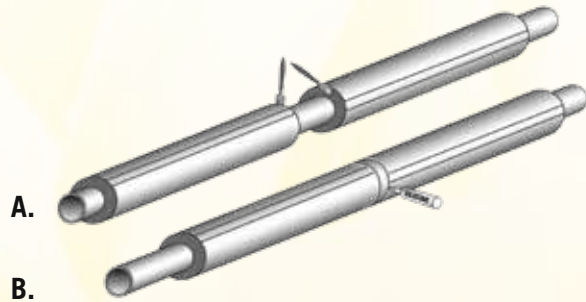
STEP 5: Apply K-FLEX Clad® Tape on the longitudinal seam to cover mechanical fasteners and achieve finished appearance. Go over tape with a plastic squeegee to eliminate wrinkles and air pockets. If the tube is in a horizontal position, position the tube so that the longitudinal seam is facing downward.

LARGE DIAMETER TUBE FORMED FROM SHEET



- A.** Cut sheet to fit circumference of tube. Allow for a 2 inch overlap. Using a knife, cut the insulation to remove 2 inches from the longitudinal length to provide for an overlap flap (be careful to not cut through the cladding). Apply K-FLEX® Contact Adhesive to the seam on both surfaces. Allow adhesive to become tacky. Wrap around pipe and apply pressure to close the seam.
- B.** Apply K-FLEX® Contact Adhesive to the overlap flap and the longitudinal seam. Allow to become tacky and apply pressure to seal flap.
- C.** Close and apply pressure. Mechanical fasteners (K-FLEX® Rivet) are also recommended.
- D.** Use 2" wide K-FLEX Clad® Tape to cover mechanical fasteners and butt seams to give finished appearance.
- E.** Use high grade (marine) silicone caulk (i.e. Bostik #70-05A) to seal seams for watertight applications.

INSTALLATION OF CONTINUOUS SECTIONS

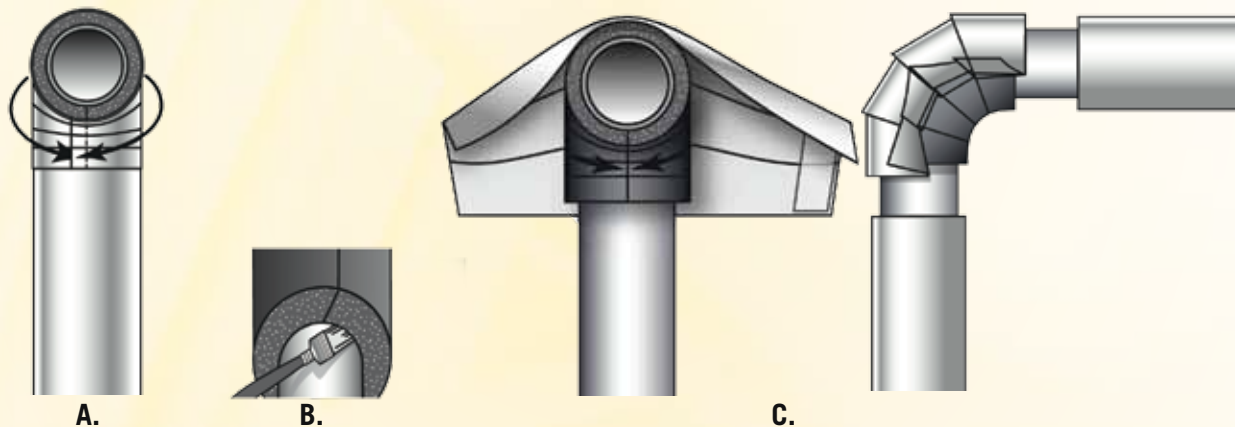


- A. Use K-FLEX® Contact Adhesive (or equivalent) for sealing all butt seams. NOTE: K-FLEX Clad® systems are provided with insulation extending beyond the clad surface to ensure a good vapor seal. Apply to both surfaces. Wait until tacky and apply pressure. Apply K-FLEX Clad® Tape over butt seam for maximum vapor barrier and appearance.
- B. Seal all butt seams with high grade (marine) silicone sealant (Bostik #70-05A) for watertight applications.

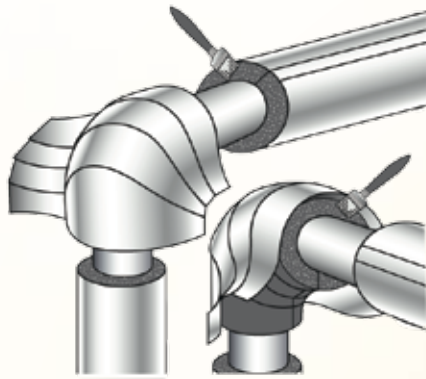
INSTALLATION OF ELBOWS

K-Fit™ prefabricated fittings can be used with the pre-formed K-FLEX Clad® Elbow

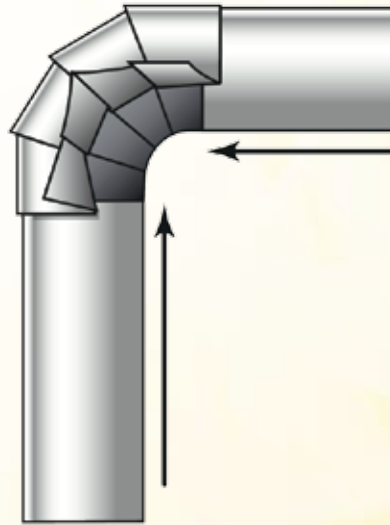
covers to complete any fitting section needed. (*Pre-formed K-FLEX Clad® AL and WT Elbows are available.*)



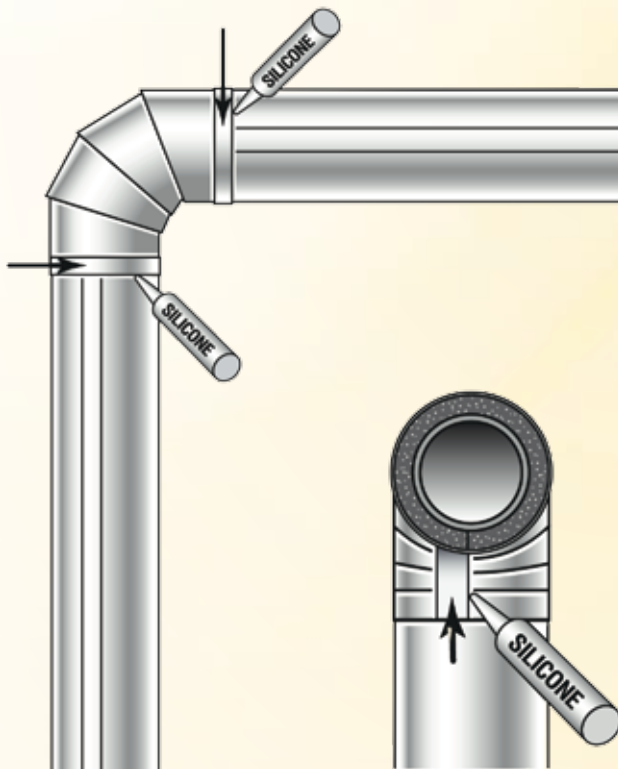
- A. Apply K-Fit™ Elbow to pipe covering.
- B. Apply K-FLEX® Contact Adhesive to close seam of K-Fit™ Elbow.
- C. Apply K-FLEX Clad® Elbow and seal seam with PSA and mechanical fastener (K-FLEX® Rivets).



D.



E.



F.



G.

- D. To form butt joints, slide K-FLEX Clad® overlap over end of section to be joined and use K-FLEX® Contact Adhesive to form a seal.
- E. Apply K-FLEX Clad® Elbow and seal seam with PSA and mechanical fastener (K-FLEX® Rivet).
- F. Apply pre-formed K-FLEX Clad® Elbow to pipe covering.
- G. Apply high-grade (marine) silicone sealant (Bostik #70-05A) to all seams for a watertight applications.



K-FLEX USA

INNOVATION IN INSULATION

PLUMBING

HVAC/R

COMMERCIAL/INDUSTRIAL

MARINE

OIL&GAS

SOLAR

ABOUT US

K-FLEX USA is a leading manufacturer of elastomeric, closed-cell thermal and acoustic insulation. Exceptionally innovative and adaptive, K-FLEX USA partners with its customers to provide solutions for demanding insulation applications. We ensure our customers' satisfaction by providing superior products with a systematic approach.

IK INSULATION GROUP

As a member of the IK Insulation Group, K-FLEX USA has global access to strong fundamental research programs and state-of-the-art levels of technical knowledge and customer support.

SALES AND SUPPORT

If you want to learn more about the benefits of using our products and solutions, please visit our website www.kflexusa.com or call us at 800-765-6475.



K-FLEX USA

100 Nomaco Drive, Youngsville, NC 27596

www.kflexusa.com

800.765.6475



KFIG-0044-1010