



K-FLEX USA
INNOVATION IN INSULATION

PLUMBING

HVAC/R

COMMERCIAL/INDUSTRIAL

MARINE

OIL&GAS

SOLAR

www.kflexusa.com

info@kflexusa.com

1-800-765-6475

INSTALLATION GUIDE

AMMONIA Refrigeration

Jacobs Engineering Refrigeration Specification Group

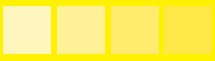
K-FLEX CLAD® WT NS (NON-SLIT)

For Slide-On Applications



Contains a Protective
Antimicrobial Agent



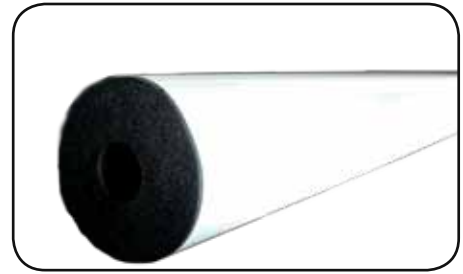


PROJECT SCOPE:

Re-insulation of existing 1" Ammonia Refrigeration Line (steel pipe) / approximately 60 Linear Feet as well as new adjacent line including 90°elbows, Tees, and any line terminations.

MATERIALS:

Straight Line Piping will use 1 3/8" I.D. x 1 1/2" Wall K-FLEX WT Clad Non Slit. Elbows and Tees are screw on type fittings and will use 2 I.D.(1 1/2" IPS) x 1 1/2" Wall K-FLEX Black Rubber mitered fittings and K-FLEX Clad® WT Jacket covering.



ABOUT K-FLEX CLAD® WT NS (NON-SLIT)

K-FLEX CLAD® WT NON-SLIT combines a flexible elastomeric tube insulation with an attractive white-finish clad covering that is moisture and mold resistant, abuse resistant, and has low VOC content. The product is sold in 3 ft. lengths non-slit for slide-on application. By eliminating a field-applied longitudinal seam, it provides a better moisture vapor barrier.

The white finish is ideal for indoor or outdoor applications where piping systems are exposed and the ability to clean and the appearance are important. K-FLEX Clad® WT NS is easy to install and can be used in a variety of applications including: rooftops, food processing plants,

supermarkets, pharmaceuticals, film processing, electronics and other clean room applications. For more information, please consult our technical data sheet.

Note: When using contact adhesives, be sure to:

- a. Use contact adhesives in well ventilated areas.
- b. Keep containers closed when not in use.
- c. Stir thoroughly.
- d. Apply with brush or convenient pressure can dispenser.
- e. Apply a thin uniform coat on both surfaces to be adhered.

- f. Apply adhesives from the inside out to avoid excessive adhesives on outer surface.
- g. Allow adhesives to become tacky - solvents to evaporate.
- h. Apply uniform pressure to seam - working from the ends to the center.
- i. Clean up with mineral spirits.
- j. Store adhesives away from heat and any open flame.
- k. Keep working area neat and clean. Avoid spills.

INSTALLATION INSTRUCTIONS K-FLEX CLAD® WT NS (NON-SLIT) - Insulating HVAC/R Systems For Slide-On Applications

BEFORE YOU START, thoroughly clean pipe to rid surface of dirt, grease and oil. Lay out insulation materials in a clean area.

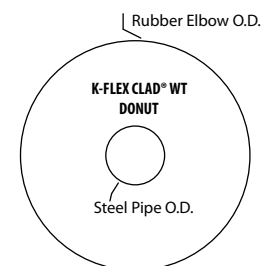
Step 1. For fittings, K-Fit® Prefabricated Fittings can be used in combination with the pre-formed K-FLEX CLAD® WT jacket covers to complete any fitting section needed.

a. Pre-apply K-Fit® fitting to steel elbow for sizing. Check distance rubber elbow sticks out over metal elbow. Apply wraps of K-FLEX® Elastomeric Foam Tape - Black

1/8" on steel pipe to build up O.D. of pipe to O.D. of Steel Elbow.

- b. Apply K-Fit® fitting to steel elbow.
- c. Close seam of K-Fit® fitting with K-FLEX® Contact Adhesive.*

STEP 2: Adhere K-FLEX® Clad WT Donut with K-FLEX® Contact Adhesive* cut to fit exposed black rubber ends of K-Fit™ Prefabricated Fittings.



* For LEED-certified buildings, use K-FLEX® 720 LVOC Contact Adhesive.



STEP 3: Slide tubing down pipe. Tubing will slide down with ease as the I.D. is designed to be slightly larger than the corresponding steel pipe. Slide all tubing onto pipe, leaving 1-2" in between sections to allow for adhesive application.



STEP 4: Rotate all tubes so seam is facing down away from excess UV exposure and abuse.



STEP 5: To seal butt seams, apply appropriate K-FLEX® Contact Adhesive* on complete elastomeric surface perimeter on both ends of tubing. Allow adhesive to become tacky and apply pressure by pushing tubing together to maintain vapor barrier and appearance.

Repeat this step for all connecting tubes.



STEP 6: Apply K-FLEX CLAD® WT Tape (tape strips included in box) to all butt seams after they have been sealed with contact adhesive. Align the tape with the longitudinal overlap seam, make sure tape is lined up straight and wrap the tape around the entire tube, applying pressure as you remove the PSA release liner to create a water-tight application. Note: The K-FLEX CLAD® WT butt strip should be centered so that it overlaps the O.D. ends of both adjoining pipes.

Repeat this step for all connecting tubes.

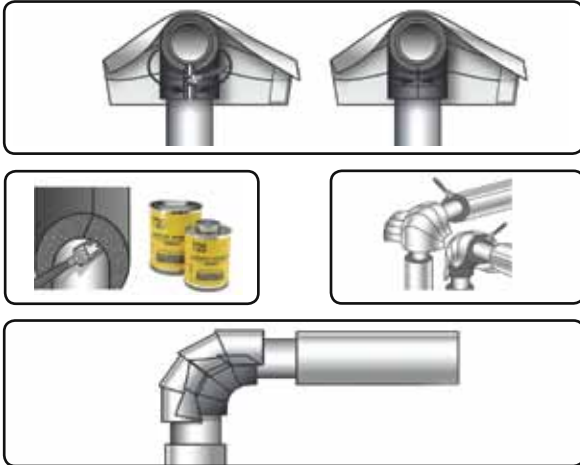


STEP 7: Seal butt joints of elastomeric fittings and adjacent K-FLEX Clad® tubular insulation per **Step 5**.

* For LEED-certified buildings, use K-FLEX® 720 LVOC Contact Adhesive.



Step 8. Applying K-FLEX CLAD® WT fitting. Install K-FLEX CLAD® WT fitting and seal the seam with attached PSA. Apply a line of adhesive around circumference of both ends of K-FLEX Clad® WT fitting and ends of K-Fit® Prefabricated Fitting. Use K-FLEX® 374 Protective Coating to seal the perimeter of the K-FLEX® Clad WT Donut and the Perimeter of the K-FLEX Clad® WT fitting.



Step 9. Apply rivets along the K-FLEX Clad® WT fitting longitudinal seam. Apply K-FLEX CLAD® WT Tape (butt strip) to seal the longitudinal K-FLEX Clad® WT fitting seam. **Reference Step 6 for tape application instructions.**



Step 10. Termination Points. Apply adhesive to the rubber insulation and the steel pipe to seal the rubber insulation tube to the pipe at the end of the termination point.

Step 11. Adhere K-FLEX Clad® WT Donut with K-FLEX® Contact Adhesive* cut to fit exposed black rubber ends of insulation termination points. **See Step 2.** Use K-FLEX® 374 Protective Coating to seal the perimeter of the K-FLEX Clad® WT Donut and the Perimeter of the K-FLEX Clad® WT pipe.

* For LEED-certified buildings, use K-FLEX® 720 LVOC Contact Adhesive.

ABOUT US

K-FLEX USA is leading the market in innovative, elastomeric, closed-cell foam insulation. We ensure our customers' satisfaction by providing superior products with a systematic approach.

OUR MISSION STATEMENT

K-FLEX USA's mission is to drive the growth and innovation of the North American elastomeric insulation market through a commitment to:

- **Our customers** - by providing reliable, sustainable, and easy-to-use products.
- **Our associates** - by empowering them and providing them with a safe, secure, and rewarding work environment.
- **Our community and the environment** - by being a socially responsible corporate citizen.