



K-FLEX USA
INNOVATION IN INSULATION

PLUMBING

HVAC/R

COMMERCIAL/INDUSTRIAL

MARINE

OIL&GAS

SOLAR

ACOUSTIC

www.kflexusa.com

info@kflexusa.com

1-800-765-6475

INSTALLATION GUIDE

DUCT COVER



Contains a Protective
Antimicrobial Agent

Made in USA





DUCT COVER INSTALLATION WITH K-FLEX CLAD® AL SHEET

K-FLEX CLAD® AL SHEET, K-FLEX CLAD® WT SHEET AND K-FLEX® LS SHEET are fiber-free, non-porous duct cover products that deliver excellent thermal insulation properties. Offered in rolls or sheets up to 2" thick, they are available with or without an aggressive acrylic pressure sensitive adhesive (PSA) on one side. For products without PSA, K-FLEX® Contact Adhesives can be used to adhere insulation to metal surfaces.

K-FLEX® LS SHEET is flexible, closed-cell elastomeric insulation with a protective skin that resists moisture and dirt and provides excellent resistance to condensation, frost formation and heat gain. It is 25/50-rated, according to ASTM E-84 standards for surface burning characteristics of building materials, up to 2" thick.

K-FLEX CLAD® AL SHEET is a composite product of flexible, closed-cell elastomeric insulation adhered to an easy-to-clean aluminum jacketing that provides weather and moisture resistance, UV protection and mechanical abuse protection. Ideal for outdoor applications, K-FLEX Clad® AL Sheet provides installed cost savings over traditional metal jacket or mastic systems with improved performance in many cases.

K-FLEX CLAD® WT SHEET is a composite product comprised of flexible, closed-cell elastomeric insulation adhered to a white PVC/Mylar® film that is easy to clean and resistant to weather, abuse, chemicals and UV rays. It is an ideal choice for applications subject to code compliance and meets 25/50 requirements when tested according to ASTM E-84 standards.

K-FLEX USA PREFERRED METHODS

For outdoor applications, using K-FLEX Clad® AL Sheet with PSA allows for faster installation and eliminates odors from contact adhesive fumes. K-FLEX Clad® AL is dent-resistant and easier to use than metal and doesn't require metal brakes or tin snips.

For horizontal ducts, create a pitch (as illustrated by the system designer) to prevent water from ponding on top of the duct.

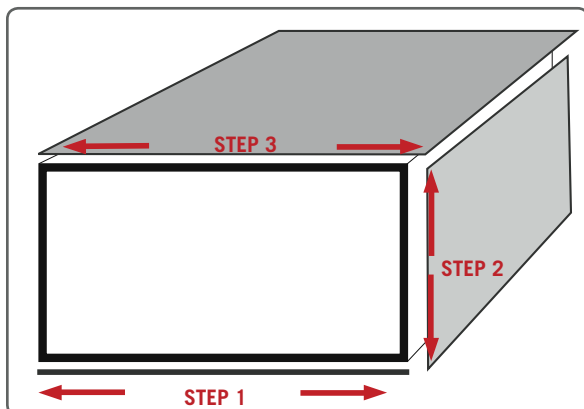
If using K-FLEX® LS Sheet outdoors, apply two coatings of K-FLEX® 374 Protective Coating to offer protection from UV rays. It is not a waterproof mastic and should not be used in areas where water ponding could occur. For additional technical information, consult the 374 Protective Coating technical data sheet.

Note: When using contact adhesives, be sure to:

- a. Use contact adhesives in well ventilated areas.
- b. Keep containers closed when not in use.
- c. Stir thoroughly.
- d. Apply with brush or convenient pressure can dispenser.
- e. Apply a thin uniform coat on both surfaces to be adhered.
- f. Apply adhesives from the inside out to avoid excessive adhesives on outer surface.
- g. Allow adhesives to become tacky and solvents to evaporate.
- h. Apply uniform pressure to seam - working from the ends to the center.
- i. Clean up with mineral spirits.
- j. Store adhesives away from heat and open flames.
- k. Keep working area neat and clean. Avoid spills.

BEFORE YOU START, make sure to thoroughly clean duct to rid surface of dirt, grease and oil. Lay out all insulation materials in a clean area. The installation order is: insulate the bottom, then the sides and finish with the top of the duct.

CUTTING INSTRUCTIONS



STEP 1: Cut the bottom piece first, making it the same width as the duct.

STEP 2: Cut both side pieces to overlap bottom section of insulation and keep flush with top of duct.

STEP 3: Cut the top piece so that it extends over the side pieces.

INSTALLATION INSTRUCTIONS (Note: K-FLEX Clad® AL is used in this example, same process applies for Clad® WT and K-FLEX® LS Sheet)



STEP 1: Cut K-FLEX Clad® AL Sheet to correct size for bottom of duct, making sure it is flush with the edge.

For Sheet with PSA: Pinch foam at edge and peel back release liner 1-2”.

For contact adhesive: Apply K-FLEX® Contact Adhesive to non-CLAD side of sheet and bottom of duct.



STEP 2: For Sheet with PSA: Line up sheet to bottom of duct and apply pressure. Once applied, move to the other side of the duct and peel back release liner from remainder of sheet. Be sure to apply even pressure to entire surface as the release liner is peeled away to eliminate air bubbles. Once sheet is applied, apply even pressure to entire sheet, particularly the edges to secure it firmly in place.

For contact adhesive: Line up sheet to bottom of duct and apply even pressure to entire surface to eliminate air bubbles. Once sheet is applied, apply even pressure to entire sheet, particularly the edges to secure it firmly in place.





STEP 3: Cut K-FLEX Clad® AL Sheet to correct size for side of duct, making sure it overlaps bottom section of insulation and is flush with top of duct.

For Sheet with PSA: Pinch foam at edge and peel back release liner 1-2”.

For contact adhesive: Apply K-FLEX® Contact Adhesive to non-CLAD side of sheet and side of duct.



STEP 4: Line up sheet edge against duct at the overlap point and apply pressure. (For Sheet with PSA, peel back release liner from remainder of sheet.) Be sure to apply pressure to entire surface and all edges to eliminate air bubbles.



STEP 5: Repeat steps 3 – 4 to complete other side of duct.



STEP 6: Cut K-FLEX Clad® AL Sheet to correct size for top of duct, making sure it overlaps insulation on both sides to create a watershed.

For Sheet with PSA: Pinch foam at edge and peel back release liner 1-2”.

For contact adhesive: Apply K-FLEX® Contact Adhesive to non-CLAD side of sheet and top of duct.



STEP 7: Line up sheet edge against edge of insulation and apply pressure. (For Sheet with PSA, peel back release liner from remainder of sheet.) Be sure to apply pressure to entire surface and all edges to eliminate air bubbles. (*Note:* A roller or squeegee can be used).



STEP 8: When butting insulation pieces together, either apply K-FLEX® Contact Adhesive to exposed edge and fit piece in, or secure both sheets in place and apply adhesive to the seam to create a wet seam. Seal all butt joints at corners with K-FLEX® Contact Adhesive to form a compression fit.



STEP 9: Apply K-FLEX Clad® Tape AL over all seams and unfinished edges to prevent water intrusion. Use a 2" wide tape for all seams and wider tape (see chart below) for edges and corners, folded to cover both sides. Go over tape with a plastic squeegee to eliminate wrinkles and air pockets.

Recommended tape sizes for edges and corners vary depending on thickness of insulation used:

INSULATION THICKNESS	TAPE WIDTH
½"	4"
1"	6"
1-1/2"	8"
2"	8"

Note: K-FLEX® Elastomeric Foam Tape, K-FLEX Clad® Tape - AL, and K-FLEX Clad® Tape - WT are available



K-FLEX USA
INNOVATION IN INSULATION

ABOUT US

K-FLEX USA is leading the market in elastomeric, closed-cell foam insulation. We ensure our customers' satisfaction by providing superior products with a systematic approach.

OUR MISSION STATEMENT

K-FLEX USA's mission is to drive the growth and innovation of the North American elastomeric insulation market through a commitment to:

- Our customers - by providing reliable, sustainable and easy-to-use products.
- Our associates - by empowering them and providing them with a safe, secure and rewarding work environment.
- Our community and the environment - by being a socially responsible corporate citizen.



K-FLEX USA
100 Nomaco Drive, Youngsville, NC 27596
www.kflexusa.com
800.765.6475

KFIG-0004-0810