

PRODUCT DESCRIPTION

K-Flex Clad™ IN

Elastomeric Insulation Clad with Polymeric Sheet

K-Flex Clad™ IN, available in both tubular and sheet form is a composite product comprised of flexible closed cell elastomeric insulation adhered to an outer covering comprised of an abuse resistant polymeric sheet gray in color, providing salt water resistance, UV protection and impact resistance, making it an excellent choice for severe outdoor conditions.

The polymeric sheet cladding provides a secondary moisture vapor barrier in addition to the closed cell foam core. The primary function of the cladding is abuse resistance and protection from UV. The flexible cladding provides for resistance to traffic (does not dent like traditional metal jackets) as well as easy maintenance.

The unique closure system (over lap system for longitudinal seams and butt joints) — no through seams — insures against moisture penetration. No special tools and fewer materials necessary at the job site make proper installation easier. K-Flex Clad™ IN is available in sheet or roll form with an easy to use aggressive seal PSA system.

320 contact adhesive is recommended for the longitudinal, butt and overlap seams. It is an aggressive adhesive specially formulated for the elastomeric clad jacket and insulation core.

This composite product has a low thermal conductivity and a high water vapor diffusion resistance factor. It practically eliminates the problem of under insulation corrosion, has excellent salt water resistance, impact resistance and UV protection. It is easy to install and combines excellent performance with low maintenance requirements. All these characteristics make it an ideal product for industrial plants, offshore platforms, FPSO's, LNG Terminals and for the shipbuilding industry.

K-Flex Clad™ IN with elastomeric insulation core can be used over a wide range of temperatures from -297°F to +220°F. K-Flex Clad™ IN is ideal for extreme temperature applications due to the ability of the outer polymeric covering to expand and contract with rapid temperature cycles, See separate data sheet for elastomeric insulation physical properties.

See reverse side for K-Flex Clad™ IN physical properties.

K-Flex Clad™ IN - ECO (non-halogen closed cell elastomeric foam insulation) should be used as the core insulation on stainless steel applications above 100°F. The temperature range for K-Flex Clad™ IN - ECO is -297°F to +300°F. K-Flex Clad™ IN - ECO meets IMO requirements for ship building and off-shore platforms.

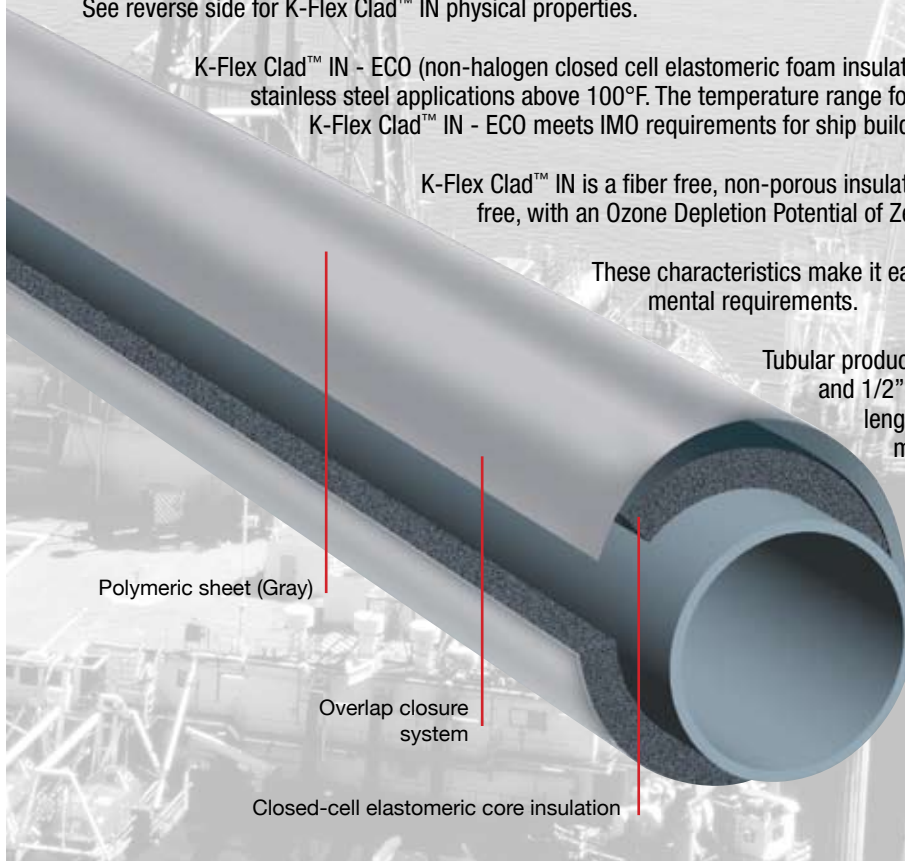
K-Flex Clad™ IN is a fiber free, non-porous insulation product. K-Flex Clad™ IN is CFC and HCFC free, with an Ozone Depletion Potential of Zero.

These characteristics make it easy to comply with Health, Safety and Environmental requirements.

Tubular product is available in standard IDs of 5/8" and above, and 1/2", 1" and 1-1/2" wall thickness in nominal 3 foot lengths. Sheet product is available in 36" x 48" dimensions or 36" wide rolls up to 2" thickness.

K-Flex Clad™ IN is available with standard elastomeric, or special order with K-Flex ECO™ non-halogen insulation. See separate data sheet for elastomeric and K-Flex ECO™ physical properties.

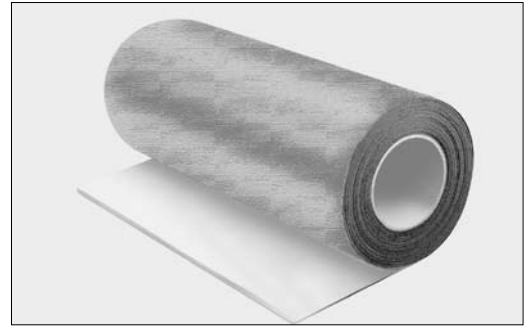
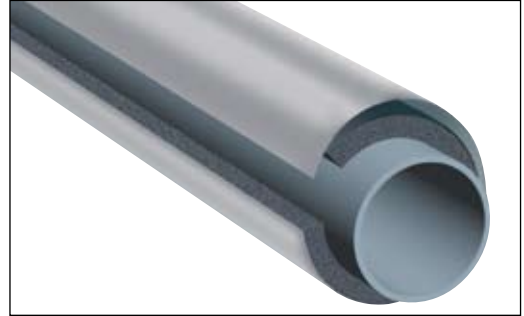
Full line of accessory products (tape and adhesives) are available — contact K-Flex USA customer service for details.



PRODUCT DESCRIPTION

K-Flex Clad™ IN

Available in pre-formed flexible tube or sheet.

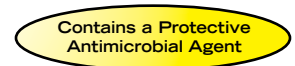


IN POLYMERIC SHEET

Material Type	Chlorosulfated Polyethylene	
Thickness	0.85 mm	
Reaction to Fire	25/350	ASTM E 84
Water Vapor Diffusion	0.0	ASTM E 96
Weather, UV Resistance	Excellent	ASTM G 53
Salt Spray Resistance	Excellent	BS 903 F12
Corrosion Risk	The system provides protection against corrosion under insulation	
Wear Resistance	Excellent	BS 903 A2
Ozone Resistance	Excellent	
Chemical Resistance	Excellent	Acids, Alcohols, Alkalies, Oils
Color	Gray	

COMPOSITE PRODUCT

Reaction to Fire	BS 476 Part 7 Cl. 1
IMO RES. A653 (16)	Lloyd's Register. Fire resistant Material



K-Flex USA - 100 Nomaco Drive - Youngsville, NC 27596 - toll free 800-765-6475 - fax 800-765-6471 - www.kflexusa.com

©January 2009 K-Flex USA. K-Flex Clad™ is a trademark of K-Flex USA. The GREENGUARD® INDOOR AIR QUALITY CERTIFIED mark is a registered certification mark used under license through the GREENGUARD® Environmental Institute.

KFPS-0021-0109